

## **BULBFEST MAY 2019**

### **APPLICATION GUIDELINES AND INSTRUCTIONS, BACKGROUND MATERIALS AND FAQs**

**Updated 1/9/2019**

#### **I. APPLICATION GUIDELINES AND INSTRUCTIONS**

APPLICATION DEADLINE: FEBRUARY 8, 11:59 PM PST

NOTIFICATIONS TO APPLICANTS: LATE FEBRUARY

APPLICATIONS SHOULD BE EMAILED TO: [albanybulbinfo@gmail.com](mailto:albanybulbinfo@gmail.com)

SUBJECT LINE SHOULD BE: BULBFEST ART SUBMITTAL

QUESTIONS: [albanybulbinfo@gmail.com](mailto:albanybulbinfo@gmail.com)

You will receive email confirmation of receipt. If you do not receive a confirmation within 72 hours, please re-send.

Your application must include the information below combined into a single PDF, 20MB max.

The filename of the PDF should include the main applicant name with the following format:

“Lastname\_Firstname\_2019art” (i.e. Sanchez\_Lisa\_2019art).

PDF file should be arranged in the following order:

1. Application form (fill out and submit this [Google Form](#) online; then save the Google form as a PDF and combine with the materials below)
2. A map marked with proposed location (please use one of the maps provided below in this PDF)
3. Up to 300-word description of work
4. Up to 5 images of the proposed work. These could be sketches, diagrams or photos, including 1 photo of the proposed site. Be sure to include your name and project name on these pages. You will be judged on the quality of your ideas, not the skills of your sketch, which can be schematic.
5. 1-2 paragraph artist bio for applicant or each member of a group
6. CV/resume (optional; NOT required)
7. Images of up to 5 selected previous works of any genre/medium

#### **APPLICATION REQUIREMENTS**

**The following may seem like a lot of small print, but we appreciate your attention to the following guidelines and rules and ask that you read them thoroughly before applying:**

**Eligibility:** Applicants may be individual artists, interdisciplinary teams, collectives, students, etc.

**Culture of Respect and Attention:** All of the guidelines and rules below grow out of the existing culture of care and respect that has been developed by the existing community of

Albany Bulb users. The people who use the park are its active stewards. As curators and artists, we come to listen and not to impose and to learn about the ecosystems and social networks at the site before making alterations.

- Please respect the existing users, the abundant wildlife, the thriving plants and the beloved existing art at the site.

**Location:**

- Mark the location where you plan to work. Use any of the maps provided.
- Include a photo of the site and a sketch/diagram explaining any logistical/topographical/access issues
- No installations may be made in sensitive salt marsh areas on the northern, northeastern, and western parts of the Bulb. No installations may be made in the mudflats north of the Neck and Bulb.

**Site tours:** Applicants are invited to optional site+history tours on

- Thurs. Jan 10, 3pm-5pm
- Sat. Jan 12, 10am-12 pm
- Sun. Jan 13, 2-4 pm.
- Please specify the date you want to attend in the Google application form.
- If you want to attend a tour but are not yet ready to submit your form, email your preferred date to [albanybulbinfo@gmail.com](mailto:albanybulbinfo@gmail.com). Tours will take place only on dates for which people sign up in advance.

**Permits:**

- Love the Bulb has a permit from the City of Albany for temporary installations and performances on the Bulb only.
- The Neck, Plateau and Beach are managed separately by the East Bay Regional Park District. (see Bulb Neck Plateau beach map and Albany Waterfront Ownership Map below). Highly ephemeral art made of natural materials such as sandcastles or fallen-leaf art at these EBRPD locations may--in some cases--be ok.
- If you would like to do anything in the EBRPD areas, please contact Susan Moffat at [albanybulbinfo@gmail.com](mailto:albanybulbinfo@gmail.com) before submitting.

**Temporary nature of works:**

- All installations are temporary.
- If selected, you will be asked to sign an agreement to remove the installations by July 31, 2019.
- No dumpsters or disposal facilities are provided, so you must transport the de-installed materials completely off-site. Please consider any costs of disposal in your planning.
- Paintings on concrete do not need to be removed but be aware that they may be painted over in the future. Installations made entirely of natural materials such as leaves that do not pose any potential safety hazards do not need to be removed.
- If you have any questions about removal, please ask us.

**Hazards:**

- The Bulb is full of hazards including protruding rebar, scrap metal, broken grass, loose rubble, hypodermic needles, holes hidden by vegetation, etc. Environmental studies have not identified any hazardous materials at the Bulb that pose immediate health risks, but there are no guarantees that there is not lead in the soil, etc.
- You are responsible for your own safety and all participants will be required to sign a waiver.

**Cleanup:**

- Pack it in, pack it out. Please remove all scraps, paint cans, etc. and dispose of them off site.
- You may not dispose of materials in the garbage cans on-site. Trash removal from the park garbage cans is irregular and the cans cannot accommodate extra trash generated in the process of making art.
- Protect areas where you are painting; do not accidentally paint the ground or plants or leave nails, screw or wire behind. Your mindfulness and care will help ensure that we can continue artistic activities at the Bulb.
- This is a public park, but much of the labor of cleanup and maintenance is done by park users, not park authorities. Please be respectful of the place and its community.

**Transportation:**

- No motorized vehicles are allowed on the Bulb.
- You must be able to transport your materials in and out by human power (carrying, wagons, bicycles).

**Electricity and water:** There is no electricity or water available at the site.

**Materials:**

- Driftwood, bricks, leaves, fallen branches, fennel, etc. are abundant on site and you are encouraged to use them.
- Please do not disturb brick patios or other facilities that were lovingly created by former residents of the Bulb.
- Please do not scavenge materials from existing sculptures.
- Select imported materials with care and consider their relation to the place. In the past, sculptures of imported materials have tended to get dismantled; the more the art seems *of the place*, the more the community seems to value and respect it.
- Plastic materials, loose paper, electronics or other materials containing heavy metals or other hazardous materials are not allowed.
- Please do not introduce invasive plants such as pampas grass, broom, or ivy. If you use plants in your work, native and climate-adapted plants are generally preferred.
- Works that may inflict harm to trees will not be accepted.

**Storage of materials:**

- There is no indoor storage at the site, and you should not leave materials or tools unattended during construction or store them at the site. Be aware that there is no gate, so all materials and art are vulnerable to the elements and to vandalism.
- Plan your assembly accordingly.

**Amplification:**

- Acoustic art is highly welcome, with prior approval required from the organizers for any amplification.

**Access and Parking:**

- You may use the parking lot for the Albany Waterfront Trail and for Albany Beach at 1 Buchanan Street (where the large bird sculpture is located).
- From this parking lot to the eastern edge of the Bulb it is 0.5 miles on one of two paths that are partly paved, partly dirt and gravel and involve short slopes. From the eastern edge of the Bulb to various installation sites is an additional 0.25 miles on both flat and sloped dirt and gravel paths.
- No motorized vehicles are allowed on the roads and trails of the Bulb, Neck and Plateau.
- Take into account physical challenges in transporting materials, bring drinking water and be ready for the presence of off-leash dogs.

**Artist's fees and material fees:**

- We will offer modest stipends of \$500 each to 10 artists or groups selected. There will be no other reimbursements for materials. Other proposers will be invited to participate, but unfortunately we cannot provide funding for all.
- We will publicize your work via social media and the web.

**Damage:**

- The site is completely open to the public so vandalism or alterations to your work may occur, as well as weathering from exposure to the elements. You may want to consider the possibility of alterations by visitors as part of the interactive nature of the art.
- Love the Bulb is not responsible for damage to your work.
- If your work is damaged in a way that creates a safety hazard, you may be asked to de-install prior to the scheduled date of July 31.

**Ownership:**

- The artist retains ownership of the physical artwork, except for art permanently affixed to the site (such as paintings on concrete).
- The artist will allow Love the Bulb to use images of the artwork in materials relating to the exhibition and to the activities of Love the Bulb, on the web and in print. Details will be laid out in an agreement to be signed by Love the Bulb and the artist.

**Community:**

- The Albany Bulb is a thriving community of regular park users including many people who visit daily with their dogs or to take quiet walks. Love the Bulb is part of this community and is conducting ongoing outreach to involve people in Bulbfest.
- We encourage artists and participants to respect existing park users as local guides with a deep knowledge of the place.

**NOTE TO PROFESSORS AND ART TEACHERS:**

We welcome participation by students. If you would like your students to participate in this exhibition but the timing of the call for proposals doesn't work for your schedule, please write to Susan Moffat at [albanybulbinfo@gmail.com](mailto:albanybulbinfo@gmail.com) and explain your concept and timing. A primary concern for us with students is that they may not be around to de-install their work at the end of the exhibition. If students and their instructors cannot commit to deinstallation in July, we ask that they de-install before the end of their academic term, or, preferably, make highly ephemeral work of natural materials.

**II. BACKGROUND MATERIALS**

The Albany Bulb is a complex place and we are seeking art that unearths new insights and relationships. We strongly emphasize site-specific, site-inspired work.

**Public Engagement**

Because the Albany Bulb is a public park there are many opportunities for your work to engage both art lovers and casual park-goers. You are welcome to propose an interactive art project that takes place with your facilitation only on May 5; or art that encourages interaction on an ongoing basis without the presence of the artist. Of course, art that interacts with the viewer simply by being seen or heard is also very welcome.

**Topics and themes:**

We welcome your creative insights on any themes relating to resilience in one way or another. Some of the inspirations that might be engaged include stories:

- of the industries and city-building that created the slag and other waste that makes up the Bulb
- of the evolution of the salt marshes and urban forest on the rubble, and associated wildlife
- of sea level rise
- of the social relations among dogs and their people
- of the 150 species of birds at the Bulb
- of the memories of people who remember the place when it was an active landfill
- of the parallels between the Bulb and nearby Ohlone shellmounds

--of the connections between the art at the Bulb with art all over the Bay Area, including the Emeryville mudflats  
--of the connections of this place to the rest of the Bay shoreline as a place of change and conflict  
--of the role of landfills around the world as resources people use to make living spaces, art, and livelihoods  
--of homemaking and homelessness.

**You may find the following materials of use.** We hope that as you discover other resources you will share them with us so that we can share them with the community of people using the Bulb to ask questions about the wider world.

“The Battle of the Bulb: Nature, Culture and Art at a San Francisco Bay Landfill,” article in *BOOM: California* by Susan Moffat.  
<https://boomcalifornia.com/2017/01/01/the-battle-of-the-bulb-nature-culture-and-art-at-a-san-francisco-bay-landfill/>

“Albany Bulb,” Article in *GroundUp* by Susan Moffat. <http://groundupjournal.org/albany-bulb/>

“Refuge in Refuse: Homesteading Art and Culture,” exhibition catalog edited by Robin Lasser:  
<https://refugeinrefuse.weebly.com/catalog.html>  
(printed catalog available for purchase here: <http://www.blurb.com/b/6246024-refuge-in-refuse>)

“Refuge in Refuse: Homesteading Art and Culture,” website for SOMArts Cultural Center exhibition curated by Robin Lasser, Danielle Siembieda and Barbara Boissevain  
<https://refugeinrefuse.weebly.com/>

*Art at the Albany Bulb*, 3-minute interview with artist and activist Osha Neumann, by Linjun Fan, 2008  
<https://www.youtube.com/watch?v=I20wBh4ZM0U>

*Bum's Paradise*, 53-min documentary film by Tomas McCabe and Andrei Rosen, 2003  
<https://www.youtube.com/watch?v=K6XYZbY8t4k>

*Where Do You Go When It Rains?* 65-minute documentary film by Andy Kreamer, 2013, revised 2014.  
<https://www.youtube.com/watch?v=eFl4qywENBs&t=83s>

*Refuge in Refuse*, 37-minute documentary film by Robin Lasser, 2015:  
<https://refugeinrefuse.weebly.com/refuge-in-refuse-37-minute-video-documentary.html>

*Wild Art, Wild Hearts: The Albany Bulb*, 15-minute documentary film by Mark Sommer, 2017.  
<https://www.youtube.com/watch?v=QzihwgjbJGk&t=5s>

3-minute video about Bulbfest

<https://www.youtube.com/watch?v=ERVZpl8T4Vw&feature=youtu.be>

30-second video about Bulbfest

<https://www.youtube.com/watch?v=cYVS0nCh0Po&feature=youtu.be>

The Storm, 5-minute music/dance video by Evie Ladin's MoToR/Dance body music choir, shot at the Bulb, directed by Chafic Saad.

<https://www.youtube.com/watch?v=dWJKC9wqM5M>

### III. FAQ

Q Who owns the Albany Bulb?

A The City of Albany owns and manages the Albany Bulb. The adjacent Neck, Plateau and Beach are managed by the East Bay Regional Park District (EBRPD) and owned in parts by EBRPD and in parts by the California State Parks. (See Albany Waterfront Ownership Map below ). The City is in ongoing discussions with EBRPD about transferring maintenance and operations at the Bulb to EBRPD.

Q What is the plan for the future of the Albany Bulb?

A If the Bulb is transferred to the EBRPD, it will be governed by the State's [Eastshore State Park General Plan](#), which was approved in 2002. This plan designates the Bulb as a Conservation Area and requires the removal of the existing art and hazards such as rebar and loose rubble and recommends removal of invasive plants. However, the 2016 [Albany Neck and Bulb Transition Study](#) takes a somewhat more favorable view of the art. So the future is uncertain.

Q What is happening at Albany Beach?

A The East Bay Regional Park District has completed two phases of a three-phase improvement plan. Phase I replaced the rubble on the south side of the Neck with riprap (rocks) and paved the existing path. Phase II focused on the beach, adding a bathroom, parking, bike racks and improved handicap accessibility and also expanded the dunes at the beach eastward with imported sand, fencing them off to establish native plant habitat. Phase III will eliminate a gap in the Bay Trail by completing the trail from Albany Beach to Gilman Street over Fleming Point (the hill where the racetrack grandstand is).

Q Are there people living at the Bulb now?

A No, the encampments were removed in 2014. Love the Bulb is in contact with some of the former residents. Some have found housing while others are still unhoused. Background on the encampments is available [here](#) and [here](#).

Q Where can I get information on wildlife, vegetation, toxics, and sea level rise at the Bulb?

A Please see the 2016 [Albany Neck and Bulb Transition Study](#), which has extensive data and maps. It is highly recommended.

[http://albanyca.granicus.com/MetaViewer.php?view\\_id=&event\\_id=527&meta\\_id=90996](http://albanyca.granicus.com/MetaViewer.php?view_id=&event_id=527&meta_id=90996)

The 2002 Eastshore State Park General Plan and associated Resource Summary also have information on the proposed Albany portion of the park:

<https://www.parks.ca.gov/pages/21299/files/eastshorestatepark-generalplan.pdf>  
<https://www.parks.ca.gov/pages/21299/files/resource-summary-06-2001.pdf>

Q Where can I find out more about future planning for the Albany Bulb?

A In addition to the documents listed in the previous answer, the Memorandum of Understanding for transferring maintenance and operations at the Bulb from the City to the EBRPD was signed in November, 2016 but has not been implemented. Discussions are continuing.

<https://www.albanyca.org/home/showdocument?id=29226>

Further information on the City's process is available here:

<https://www.albanyca.org/recreation/waterfront/albany-bulb-transition-planning-process>

Public meetings of the East Bay Regional Park District are posted here:

<https://www.ebparks.org/about/meetings/default.htm>

-





Northwest  
Cove

Salt Marsh

Bulletin Board

Bathroom

Bike Racks

I-580

I-80

Mudflats

The Plateau

The Neck

Buchanan St.

Conversation Pit  
"firepit" aka Carlo  
Ferretti's Cove

Beach

Bird Sculpture

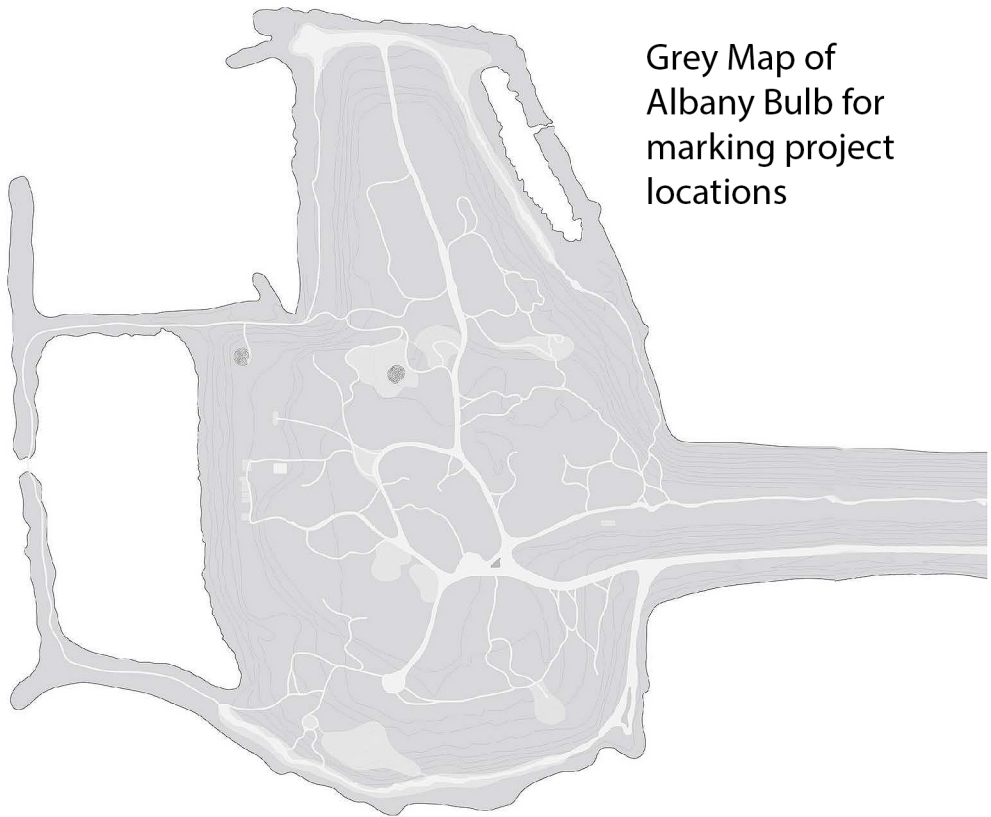
Western  
Lagoon

The Bulb

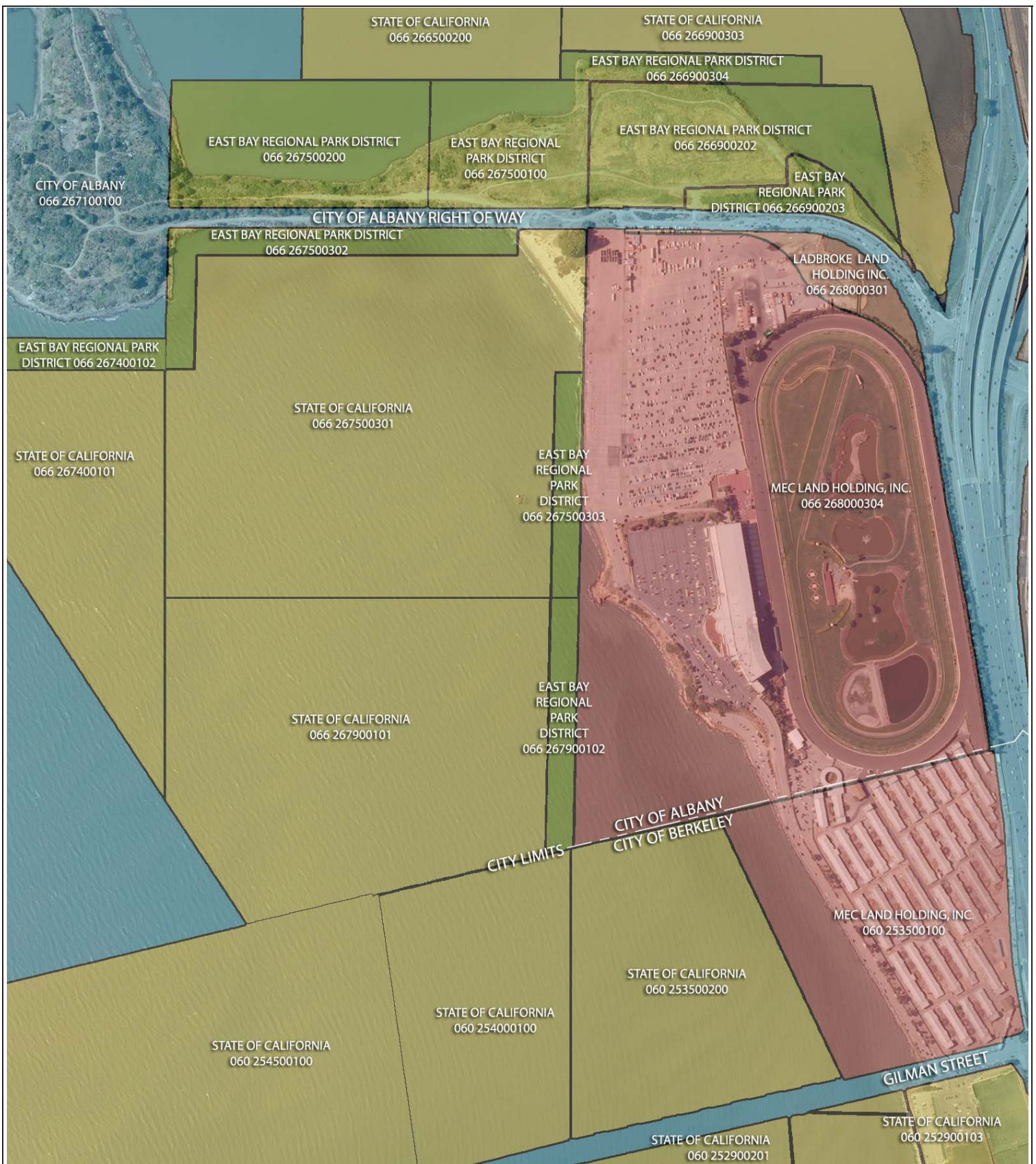
Map of Albany Bulb, Neck,  
Plateau and Beach



Grey Map of  
Albany Bulb for  
marking project  
locations







**East Bay Regional Park District**  
P.O. Box 5381, Oakland, CA 94605  
[www.ebparks.org](http://www.ebparks.org)

**FIGURE 4.9-1**

**PROPERTY OWNERSHIP**  
*ALBANY BEACH RESTORATION AND PUBLIC ACCESS*  
*EASTSHORE STATE PARK*